

2012-2013 Report Card for Licking Valley Local School District

DISTRICT GRADE

Coming in
2015



Achievement

This grade combines two results for students who took the state tests. The first result answers the question – How many students passed the state test? The second result answers the question – How well did students do on the state test?

Performance Index
82.3% B
Indicators Met
91.7% A

COMPONENT GRADE

Coming in
2015



Progress

This is your district's average progress for its students in math and reading, grades 4-8. It looks at how much each student learns in a year. Did the students get a year's worth of growth? Did they get more? Did they get less?

Value-Added
Overall..... F
Gifted..... F
Students with Disabilities..... C
Lowest 20% in Achievement..... C

COMPONENT GRADE

Coming in
2015



Gap Closing

This grade shows how well all students are doing in your district in reading, math, and graduation. It answers the question – Is every student succeeding, regardless of income, race, culture or disability?

Annual Measurable Objectives
56.7% F

COMPONENT GRADE

Coming in
2015



Graduation Rate

This grade answers the question – How many ninth graders graduate in four years or five years?

Graduation Rates
90.1% of students graduated in 4 years..... B
91.1% of students graduated in 5 years..... B

COMPONENT GRADE

Coming in
2015



K-3 Literacy

This grade answers the question – Are more students learning to read in kindergarten through third grade? The 2014 report card will report some results. The 2015 report card will display one grade for kindergarten through grade 3.

COMPONENT GRADE

Coming in
2015



Prepared for Success

This grade answers the question – Are students who graduate from our district ready for college or a career? There are six ways to show that graduates are prepared. In the 2014 school year, the report card will show results for the six areas. The 2015 report card will display one grade combining the results of all six ways of showing graduates are prepared.

COMPONENT GRADE

Coming in
2015

Achievement



This grade combines two results for students who took the state tests. The first result answers the question – How many students passed the state test? The second result answers the question – How well did students do on the state test?

COMPONENT GRADE

Coming in
2015

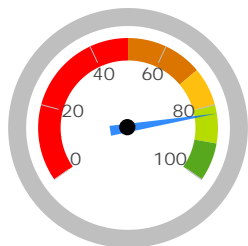
GRADE

B

Performance Index

The Performance Index measures the test results of every student, not just those who score proficient or higher. There are six levels on the index and districts receive points for every student in each of these levels. The higher the achievement level the more the points awarded in the district's index. This rewards schools and districts for improving performance.

Performance Index

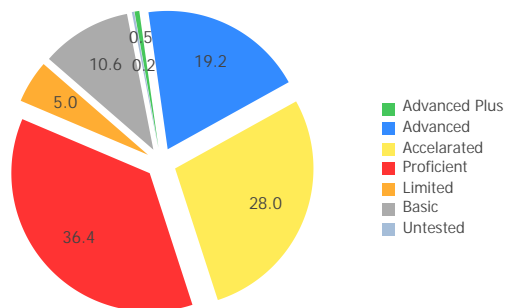


82.3%

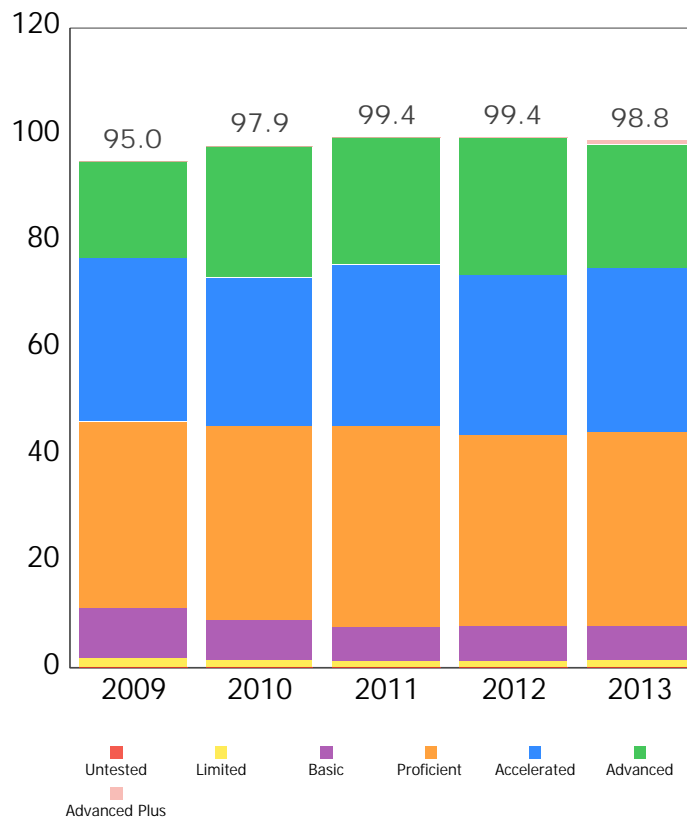
98.8 of a possible 120.0

A = 90.0 - 100.0%
B = 80.0 - 89.9%
C = 70.0 - 79.9%
D = 50.0 - 69.9%
F = 0.0 - 49.9%

Achievement Level	Pct of Students		Points for this Level		Points Received
Advanced Plus	0.5	x	1.3	=	0.7
Advanced	19.2	x	1.2	=	23.0
Accelerated	28.0	x	1.1	=	30.8
Proficient	36.4	x	1.0	=	36.4
Basic	10.6	x	0.6	=	6.4
Limited	5.0	x	0.3	=	1.5
Untested	0.2	x	0.0	=	0.0
				=	98.8



Performance Index Trend



GRADE

A

Indicators Met

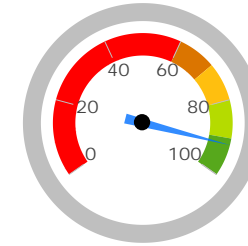
Indicators Met measures how many students have passed the state tests at a minimum level, called proficient, or higher. Test results are reported for each student in a grade and subject. At least 75 percent of students must pass to get credit for the indicator. Starting in the 2013-14 school year, a district or school needs to have 80 percent of their students pass at a minimum level or higher in order to "meet" an indicator.

Indicators Met %

91.7%

22.0 out of 24.0

A = 90.0 - 100.0%
B = 80.0 - 89.9%
C = 70.0 - 79.9%
D = 50.0 - 69.9%
F = 0.0 - 49.9%



Grades 3-5

3rd Grade	Mathematics	76.4%	✓
	Reading	85.0%	✓
4th Grade	Mathematics	82.7%	✓
	Reading	91.0%	✓
5th Grade	Mathematics	72.5%	✗
	Reading	76.5%	✓
	Science	76.5%	✓

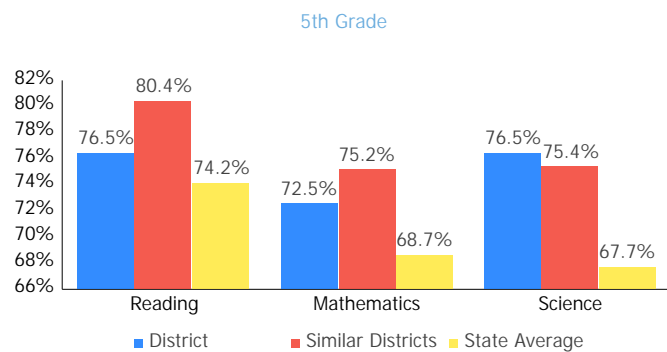
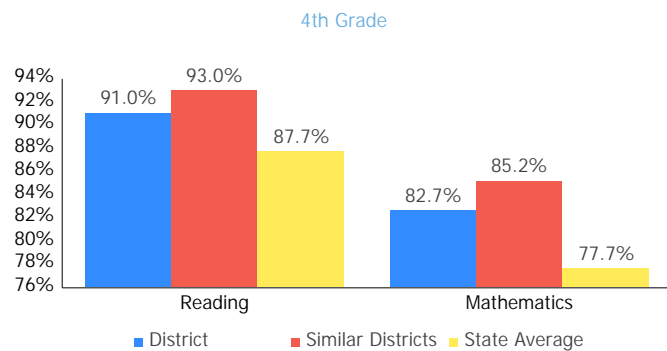
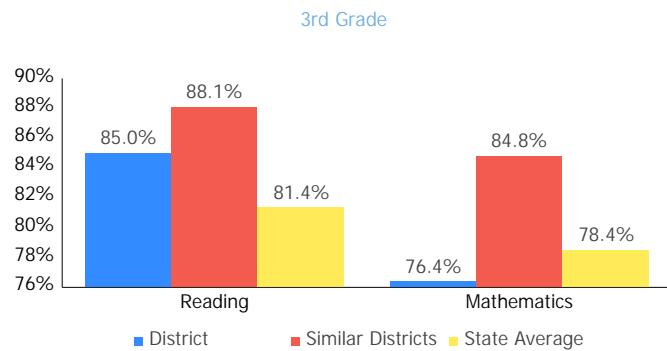
Grades 6-8

6th Grade	Mathematics	74.7%	✗
	Reading	83.3%	✓
7th Grade	Mathematics	78.5%	✓
	Reading	78.5%	✓
8th Grade	Mathematics	90.2%	✓
	Reading	88.9%	✓
	Science	83.0%	✓

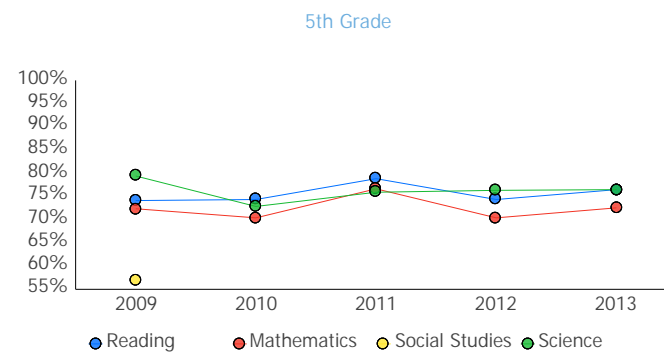
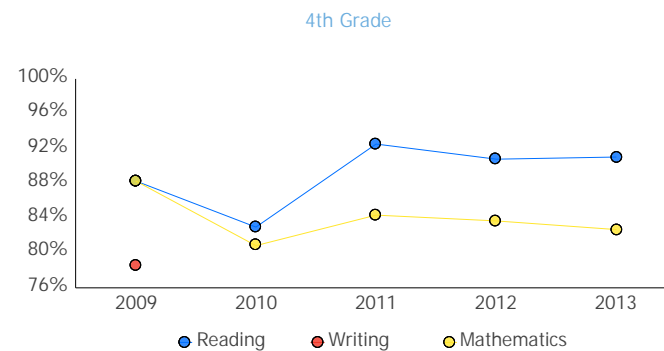
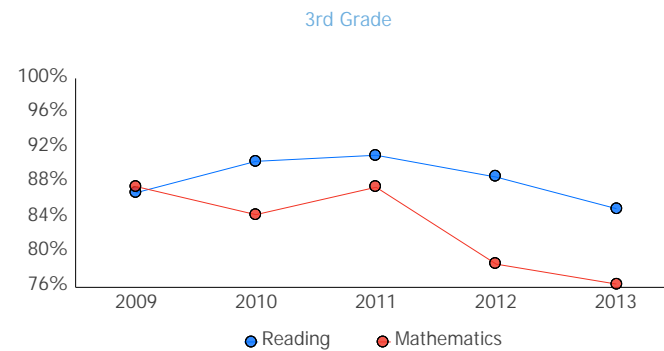
Ohio Graduation Test

OGT, 10th Graders	Mathematics	93.5%	✓
	Reading	94.2%	✓
	Science	89.6%	✓
	Social Studies	89.6%	✓
	Writing	96.8%	✓
OGT, 11th Graders	Mathematics	97.2%	✓
	Reading	97.2%	✓
	Science	93.0%	✓
	Social Studies	94.4%	✓
	Writing	95.1%	✓

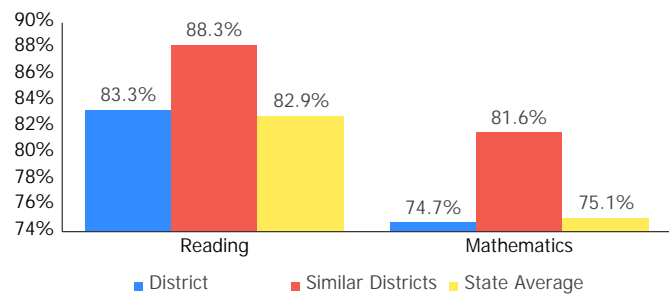
Proficiency Percent Comparison by Grade



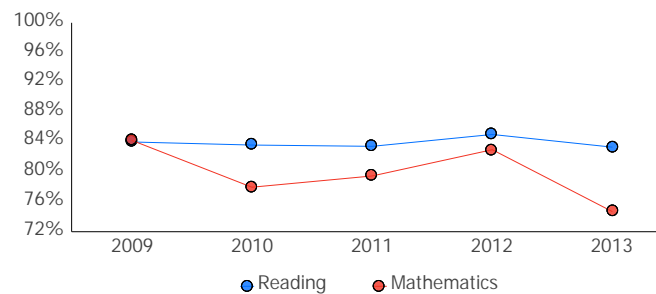
Proficient Percent Trend by Grade



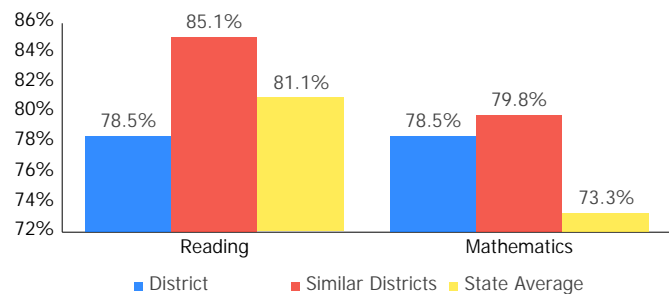
6th Grade



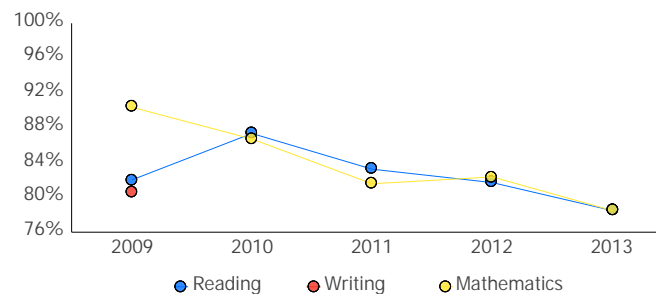
6th Grade



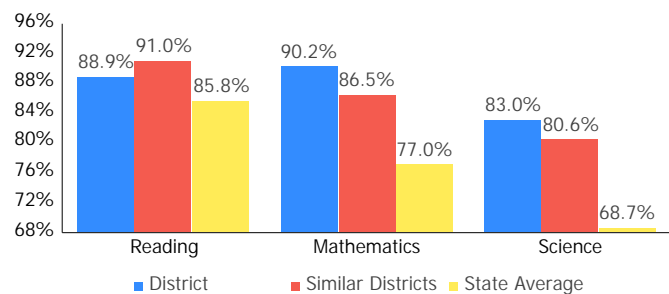
7th Grade



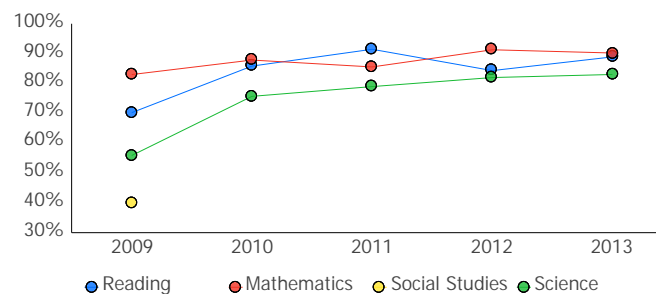
7th Grade



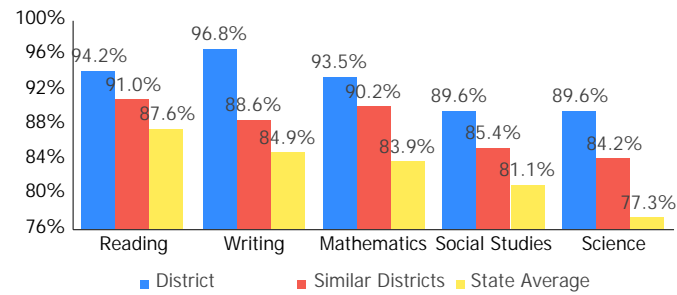
8th Grade



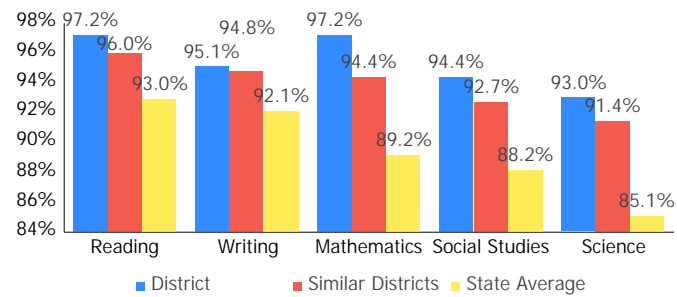
8th Grade



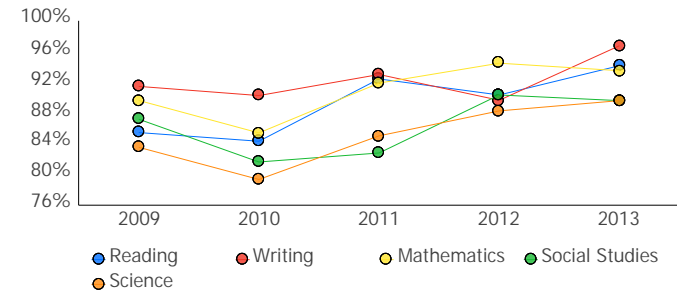
10th Grade OGT



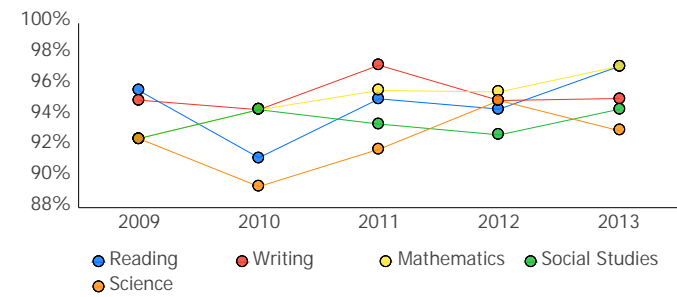
11th Grade Cumulative OGT



10th Grade OGT



11th Grade Cumulative OGT



Progress



This is your district's average progress for its students in math and reading, grades 4-8. It looks at how much each student learns in a year. It answers the question – Did the students get a year's worth of growth? Did they get more? Did they get less?

COMPONENT GRADE

Coming in
2015

GRADE

F

Overall

This measures the progress for all students in math and reading, grades 4-8.

GRADE

F

Gifted Students

This measures the progress for students identified as gifted in reading, math, and/or superior cognitive ability.

GRADE

C

Students in the Lowest 20% in Achievement

This measures the progress for students identified as the lowest 20% statewide in reading and math achievement.

GRADE

C

Students with Disabilities

This measures the progress for students with disabilities.

GRADE

Coming
in 2016

High School

A High School measure of progress will be implemented in the 2015-16 school year.

Progress Details

This table shows the Progress scores by test grade and subject.

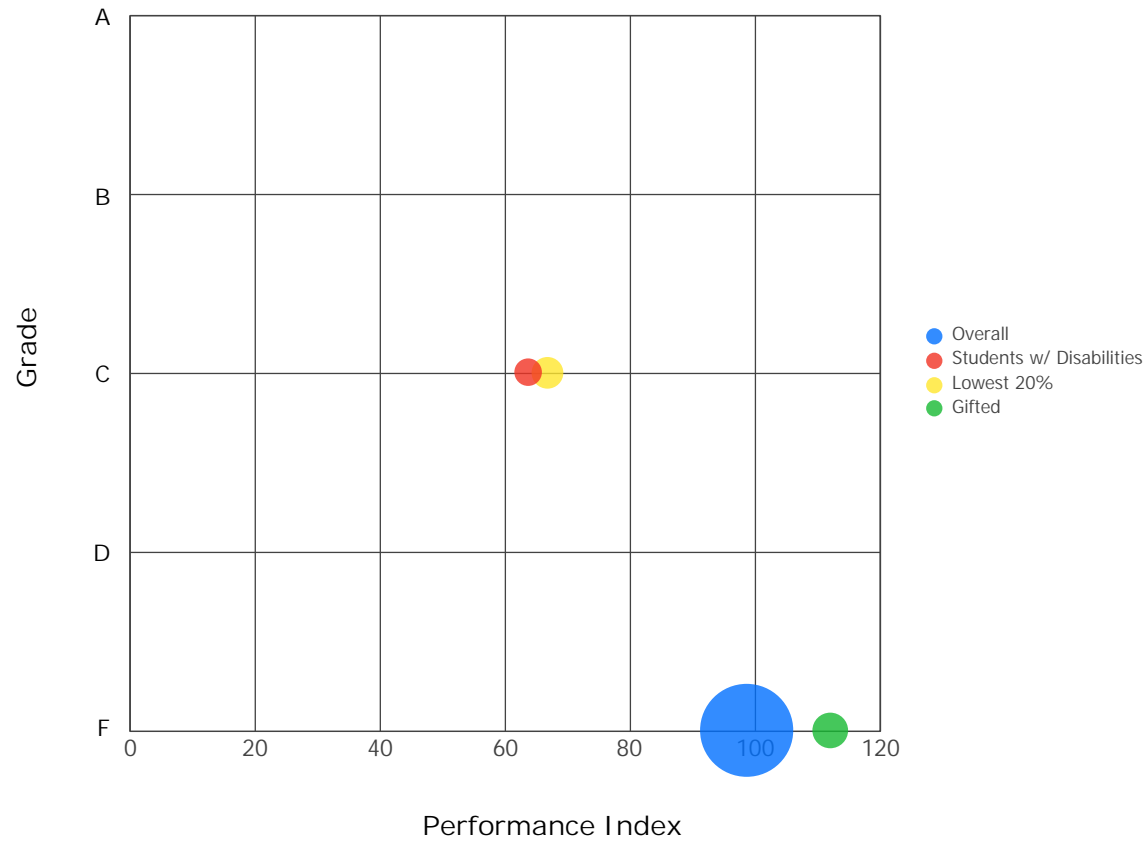
Test Grade	Progress Score		
	Reading	Mathematics	All Tests
All Grades	-6.0	1.9	-2.9
4th Grade	-1.8	2.9	0.6
5th Grade	-5.7	-5.3	-7.2
6th Grade	-2.4	-5.1	-4.8
7th Grade	1.6	7.4	5.7
8th Grade	-1.0	3.9	1.7

Although Progress scores are not assigned letter grades at this level of detail, the grading scale applied at the Overall (All Students, All Tests) level is:

A = 2.0 and up
B = 1.0 to 1.9
C = -1.0 to 0.9
D = -2.0 to -1.1
F = below -2.0

Progress vs. Performance Index

This bubble chart shows the relationship between each subgroup's performance index results (horizontal axis) to the Value-Added letter grade (vertical axis). The size of the bubble represents the size of the student subgroup.



Gap Closing



This grade shows how well all students are doing in your district in reading, math, and graduation. It answers the question – Is every student succeeding, regardless of income, race, culture or disability?

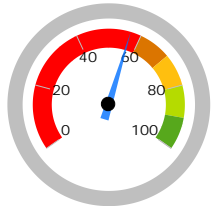
COMPONENT GRADE

Coming in
2015

GRADE

F

AMO Points

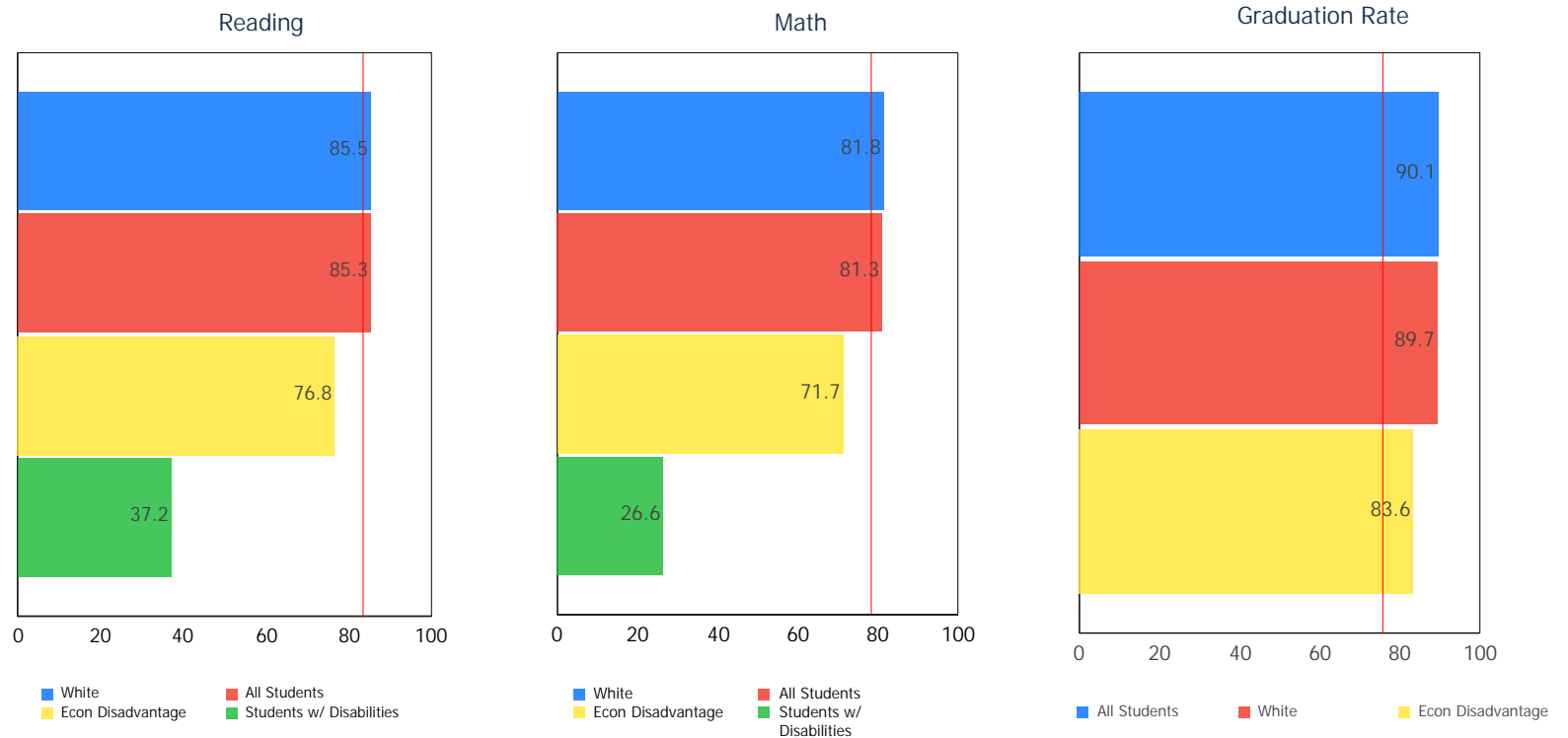


56.7%

A = 90.0 - 100.0%
B = 80.0 - 89.9%
C = 70.0 - 79.9%
D = 60.0 - 69.9%
F = 0.0 - 59.9%

Annual Measurable Objectives

Annual Measurable Objectives (AMOs) compare the performance of all students to a state goal which is displayed as the red line in the following charts. These charts show how well each group achieves that goal in reading, math and graduation – and emphasize any achievement gaps that exist between groups. The ultimate goal is for all groups to achieve at high levels.



The red line on each graph identifies the Annual Measurable Objective. The 2013 AMO for Reading is 83.4%, for Math is 78.5%, and for Graduation Rate is 75.9%. Subgroups with fewer than 30 students are not rated and do not appear on the graphs.

Graduation Rate



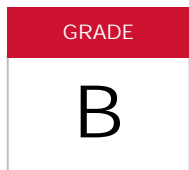
This grade represents the percentage of students whom entered the 9th grade and graduated 4 and 5 years later.

COMPONENT GRADE

Coming in
2015

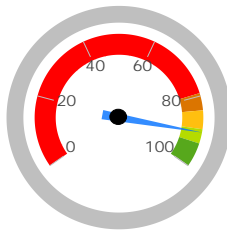
4-Year Graduation Rate

The 4-year graduation rate applies to the Class of 2012 who graduated within four years, i.e. students who entered the 9th grade in 2009 and graduated by 2012.



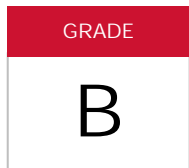
90.1%

A = 93.0 - 100.0%
B = 89.0 - 92.9%
C = 84.0 - 88.9%
D = 79.0 - 83.9%
F = 0.0 - 78.9%



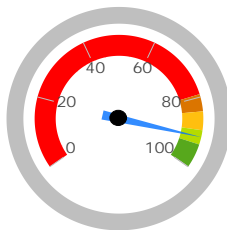
5-Year Graduation Rate

The 5-year graduation rate applies to the Class of 2011 who graduated within five years, i.e. students who entered the 9th grade in 2008 and graduated by 2012.

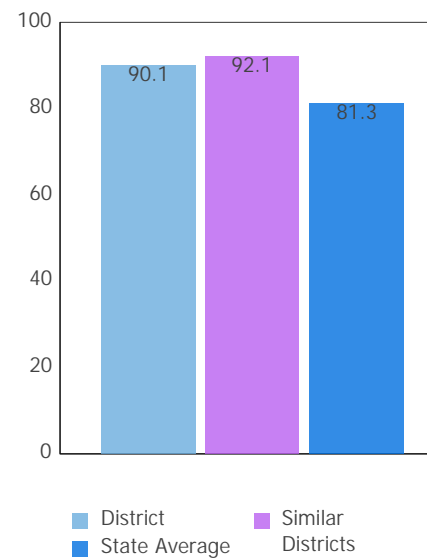


91.1%

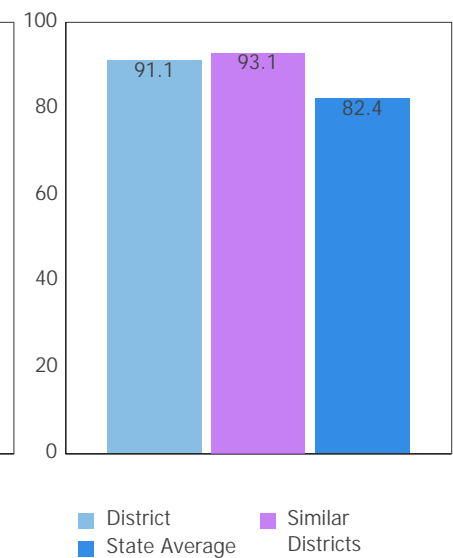
A = 95.0 - 100.0%
B = 90.0 - 94.9%
C = 85.0 - 89.9%
D = 80.0 - 84.9%
F = 0.0 - 79.9%



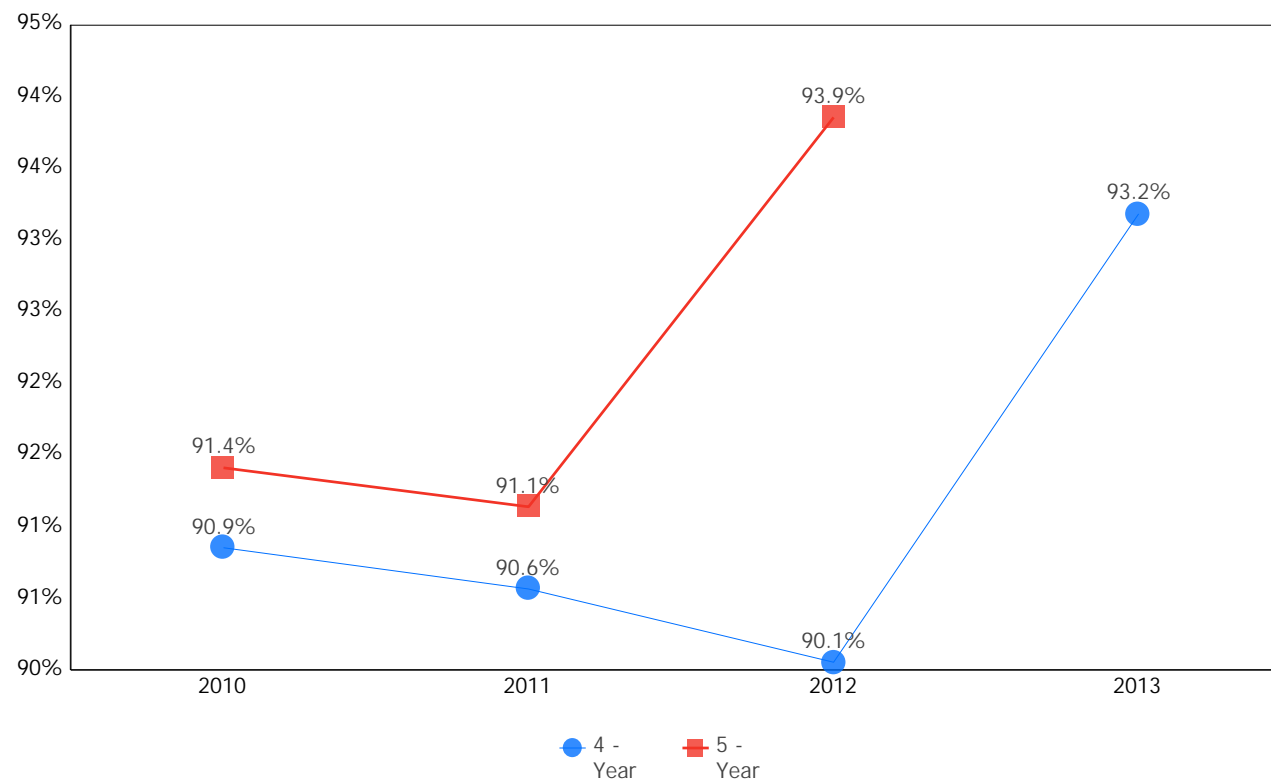
4-Year Rate



5-Year Rate



Graduation Rate Trend



Note: The 5-year graduation rate does not appear in the final year of this graph because the necessary data is not yet available to calculate the 5-year rate for that school year.

2012-2013 Report Card for Licking Valley Local School District



Superintendent: David L. Hile
Address: 1379 Licking Valley Rd
Newark OH 43055-9450

Phone: (740) 763-3525
County: Licking

Directory information current as of the 2012-2013 Report Card publication date

Your District's Students

Average
Daily
Enrollment:

2,065

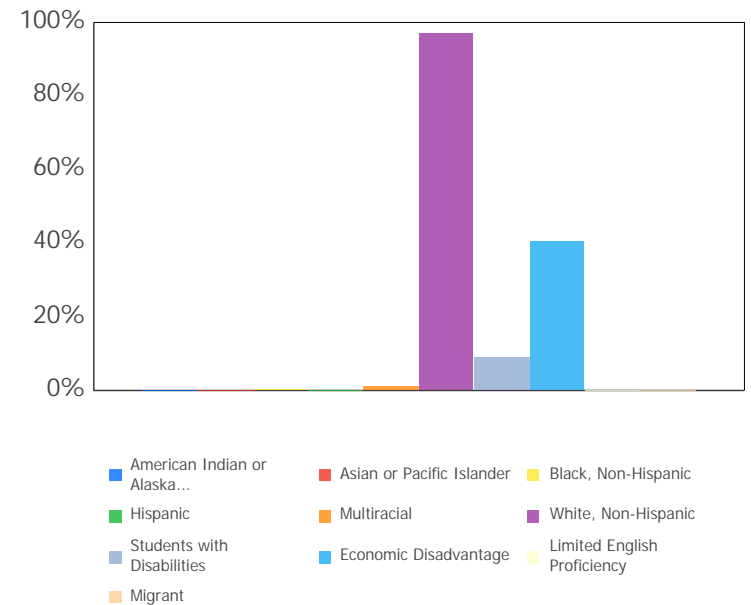
Number of
Limited
English
Proficiency
Students
Excluded from
Accountability
Calculations:

--

Enrollment by Subgroup

	Enrollment #	Enrollment %
Am. Indian / Alaskan Native	NC	
Asian or Pacific Islander	NC	
Black, Non-Hispanic	15	0.7%
Hispanic	NC	
Multiracial	30	1.5%
White, Non-Hispanic	2,006	97.2%
Students with Disabilities	191	9.2%
Economically Disadvantaged	840	40.7%
Limited English Proficiency	NC	
Migrant	NC	

NC = Not Calculated because there are fewer than 10 in the group

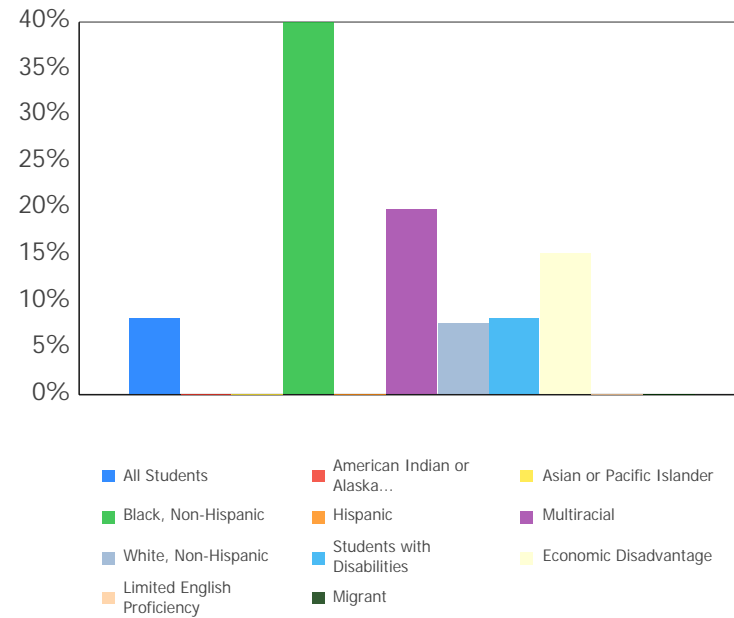


Enrollments of less than 10 students are not shown.

Mobility Rates by Subgroup

	District Mobility %
All Students	8.2%
Am. Indian / Alaskan Native	0.0%
Asian or Pacific Islander	0.0%
Black, Non-Hispanic	40.0%
Hispanic	16.7%
Multiracial	20.0%
White, Non-Hispanic	7.7%
Students with Disabilities	8.2%
Economically Disadvantaged	15.2%
Limited English Proficiency	
Migrant	

NC = Not Calculated because there are fewer than 10 in the group



This chart shows the percentage of students who, because they moved into or out of the district, did not spend a majority of the school year within the district.

Your District's Teachers

	All Schools in the District	High Poverty Schools	Low Poverty Schools
Percentage of teachers with at least a Bachelor's Degree	99.1	0.0	0.0
Percentage of teachers with at least a Master's Degree	59.0	0.0	0.0
Percentage of core academic subject and elementary classes not taught by Highly Qualified Teachers	0	--	--
Percentage of core academic subject and elementary classes taught by properly certified teachers	99.1	--	--
Percentage of core academic subject elementary and secondary classes taught by teachers with temporary, conditional or long-term substitute certification/licensure	0	--	--

High-poverty schools are those ranked in the top quartile based on the percentage of economically disadvantaged students. Low-poverty schools are those ranked in the bottom quartile based on the percentage of economically disadvantaged students. A district may have buildings in both quartiles, in just one quartile or in neither quartile.

NC = Not Calculated because there are fewer than 10 in the group

Wellness and Physical Education

The extent to which students are successful in meeting the benchmarks contained in Ohio's physical education standards	Compliance with the federal requirement for implementing a local wellness policy	Elected to administer BMI screening	Participation in Physical Activity Pilot Program
Moderate Success	X	X	X

Financial Data



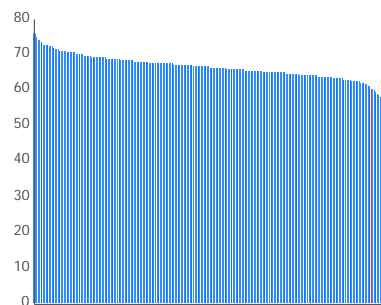
These measures answer several questions about spending and performance. How much is spent on Classroom instruction? How much, on average, is spent on each student? What is the source of the revenue? How do these measures compare to other districts and schools?

Comparison Group: Enrollment between 1000 and 2499

Classroom Spending Data

Percentage Spent on
Classroom Instruction
60.2%

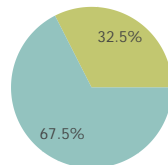
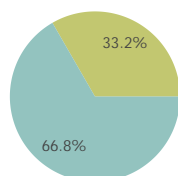
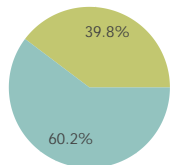
Rank in comparison group
for highest % spent
272 out of 282



District

Comparison Group

State



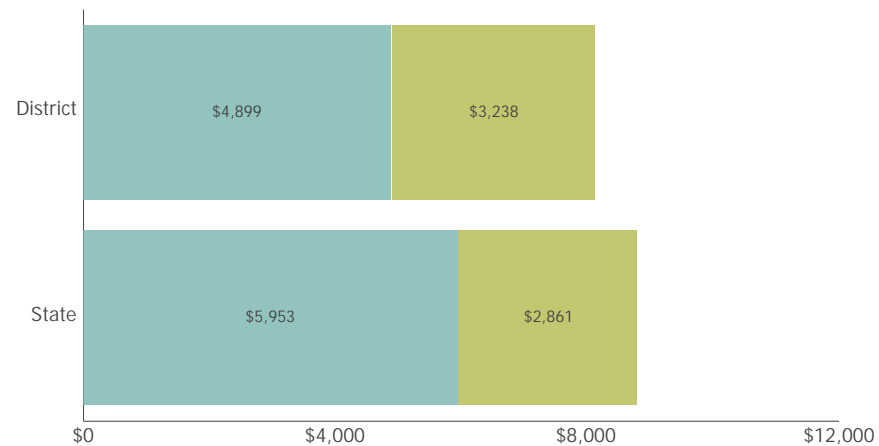
Classroom Instruction



Non-Classroom Instruction

Spending per Pupil Data

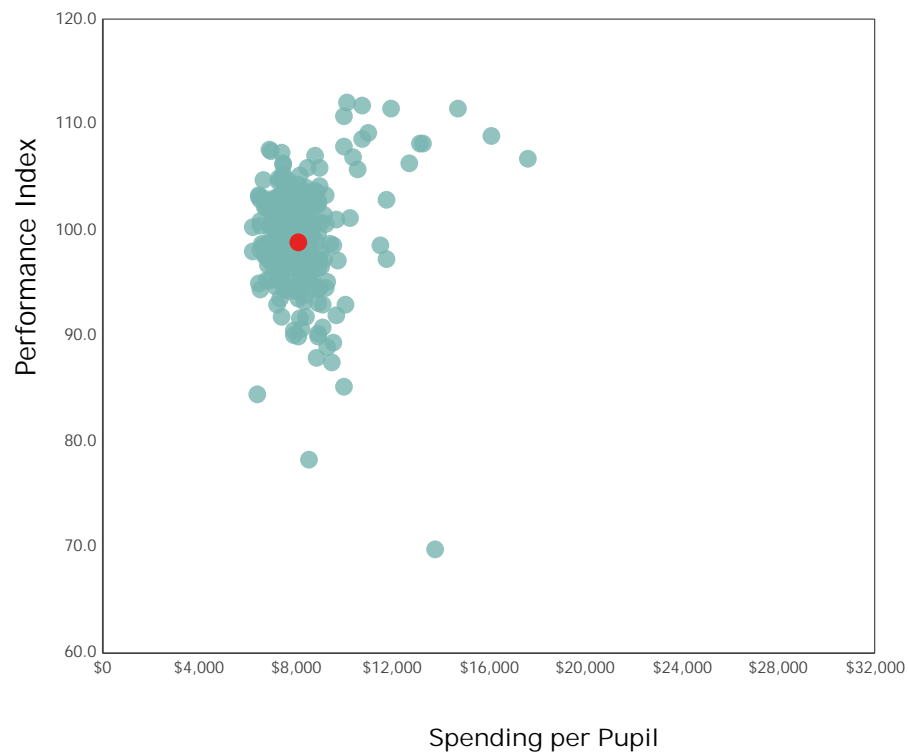
	District	State
Operating Spending per Pupil	\$8,137	\$8,814
Classroom Instruction	\$4,899	\$5,953
Non-Classroom Spending	\$3,238	\$2,861



Spending and Performance

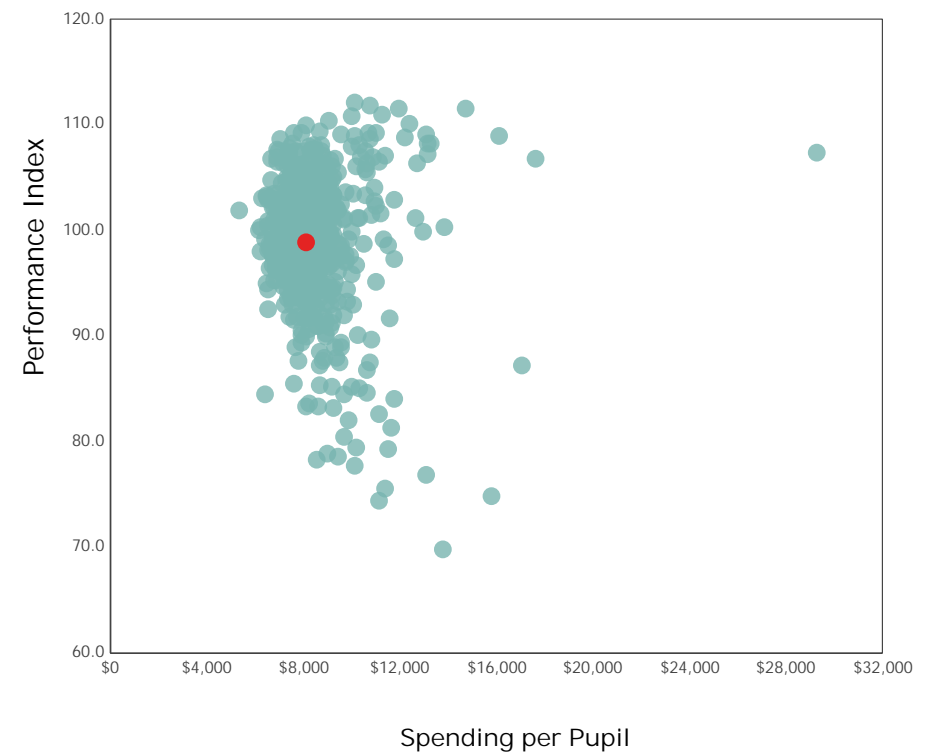
This measure answers the question – what is the relationship of average spending per student to performance, and how does that compare to similar districts and schools?

Comparison Group



✗ Licking Valley Local IS NOT among the 20% of traditional public districts with the highest academic performance index scores.

All Districts

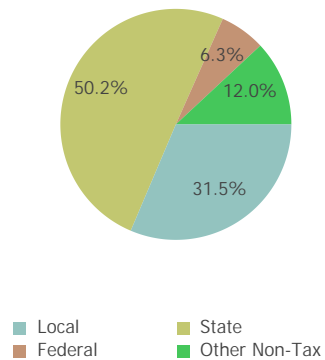


✗ Licking Valley Local IS NOT among the 20% of traditional public districts with the lowest operating expenditures per pupil

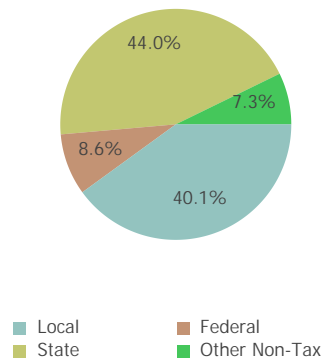
Source of Revenue

Source of Funds	District		State Total	
Local	\$5,954,618	31.5%	\$7,953,216,862	40.1%
State	\$9,486,647	50.2%	\$8,725,275,316	44.0%
Federal	\$1,188,170	6.3%	\$1,701,436,355	8.6%
Other Non-Tax	\$2,258,245	12.0%	\$1,442,122,710	7.3%
Total	\$18,887,680	100.0%	\$19,822,051,242	100.0%

District



State





Superintendent: David L. Hile
 Address: 1379 Licking Valley Rd
 Newark OH 43055-9450

Phone: (740) 763-3525
 County: Licking

Your District's Schools

School	Achievement		Progress				Gap Closing	Graduation Rate	
	Indicators Met	Performance Index	Overall	Gifted	Lowest 20% Achieve	Students with Disabilities	Annual Measurable Objectives	4-Year Graduation Rate	5-Year Graduation Rate
Licking Valley Elementary School	C	B	F	D	C	C	F	NR	NR
Licking Valley High School	B	A	NR	NR	NR	NR	A	B	B
Licking Valley Middle School	B	B	B	D	B	C	F	NR	NR